

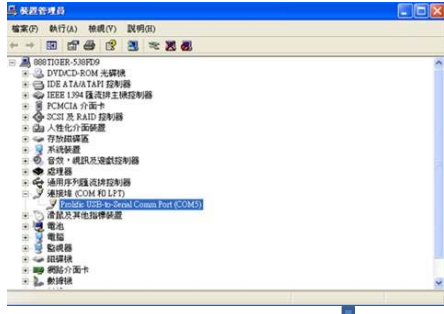
Quick Installation Guide for ADII Pro. RS232-USB

Step 1. Down load PPS & RS232-USB driver from Unication Website <http://www.uni.com.tw/>

Step 2. Install RS232-USB driver for capable usage

Step 3. Connect RS232-USB connection line of programmer with PC or laptop (be sure to plug in the programmer's adaptor)

Step 4. Enter to "Control Panel" of PC or laptop → enter to "System" → enter to "Hardware" → finally enter to "Hardware Wizard" so as to check & make sure the name of (Com & LPT) that RS232-USB is connected with the PC or laptop. (please remember the name of the com port)



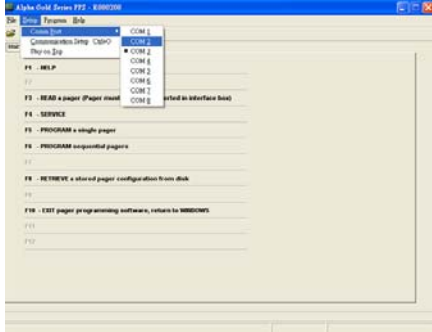
Remark: Due to Elite only has 4 com ports (1~4) in DOS PPS, if USB port connected with PC or laptop is larger then com 4, please insert the USB to another port. So the com port could be set in Elite DOS PPS later on.

(A.) For Gold Series (Windows PPS)

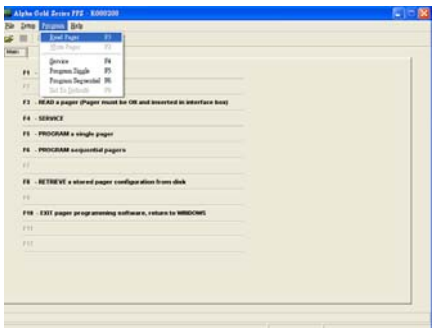
Step 5. Open up PPS

Setup Com Port which RS232-USB is Connected in PPS (see Step 4. for making sure & getting to know the port's name)

Complete Com Port Setup

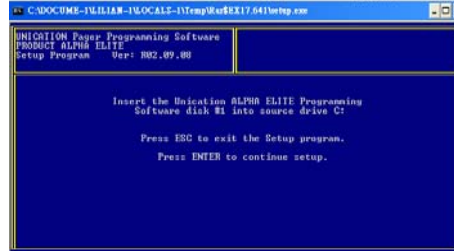


Program Read Pager Function

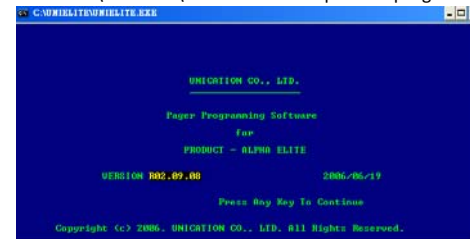


(B.) For Elite (DOS PPS)

Step 5. Make sure PPS being stored & installed in PC or laptop (usually the PPS is saved in C:\UNIELITE – default setting)

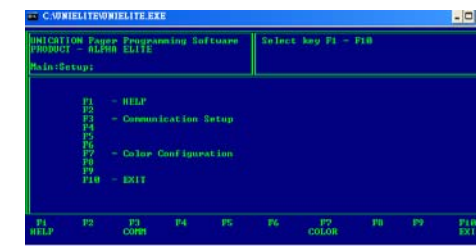


Step 6. Execute C:\UNIELITE\UNIELITE.EXE → Open PPS programming software

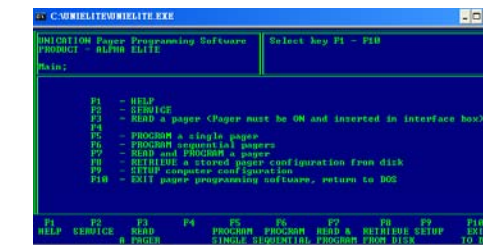


Step 7.

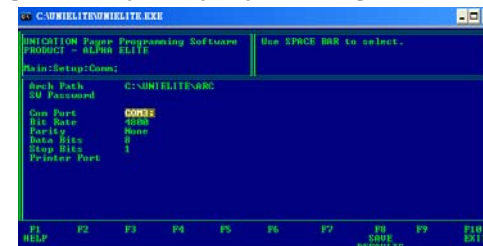
(a.) Enter into PPS main manual → Press "F9" → then Press "F3" →



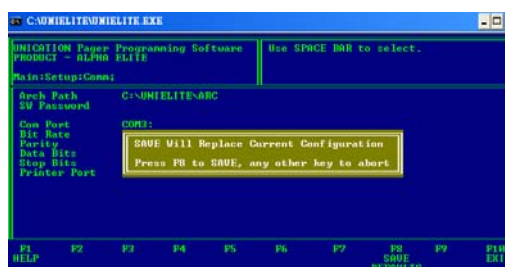
(b.) then Press "F3" →



(c.) Setup Com Port / Press "Space key" to select com port. (see Step 4. for making sure & getting to know the port's name)



Step 8. Finish Com Port setting in PPS → Press "F8" Twice to Save the Setting



Step 9. Pager can be programmed (shall there be any problem to program, please re-check whether the com port setting is correct).

Note: Due to Elite only has 4 com ports in PPS, if USB port connected with PC or laptop is larger then com 4, please insert the USB to another port.